



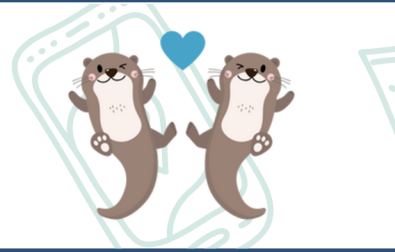
TALK TIME
BOSTON, MA

BOSTON, MA

2025

SOCIAL INTENSIVE

THERAPEUTIC CAMP



WHAT IS IT?

□ A WEEK LONG CAMP TARGETING SOCIAL COMMUNICATION

Our campers work on navigating peer relationships and learning about social communication skills while participating in activities for the theme of the week.

August 2025: *Summer Send-Off*

Say goodbye to summer and hello to school. Join us for a week of playful routines, creative make-believe, and friendship-filled fun as we soak up the final days of summer and start thinking about the transition to school.



□ A VARIETY OF ENGAGING LEARNING ACTIVITIES

The intensive will build skills in turn-taking, clear communication, flexible thinking, executive functioning, and more. There will also be a snack, outdoor play, and lunch time.



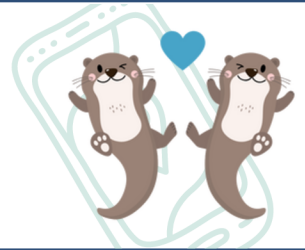
□ A FOCUS ON SKILLS ACROSS SETTINGS

Each child will have individualized support from an SLP and targeted goals to help expand their social communication skills with peers.



SOCIAL INTENSIVE

THERAPEUTIC CAMP



LOGISTICS

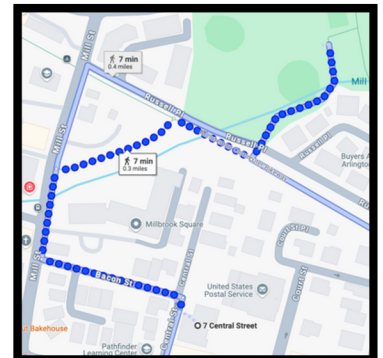


DATE: August 25-29

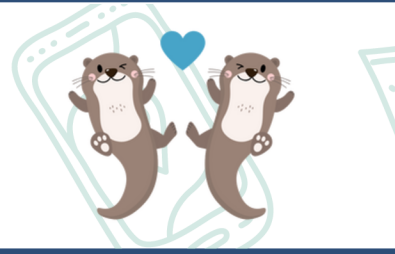
TIME: 9:00am - 1:00pm

ADDRESS: 7 Central Street, Suite 200, Arlington, MA 02476

- ☐ **Drop off:** Please do not drop your child off earlier than 9:00. We will be getting our activities for the day ready prior to 9:00AM.
- ☐ **Pick up:** Please be back on the premises for pick up no later than 12:55 to ensure your child is picked up promptly at 1:00PM. Aftercare is not available for this intensive.
- ☐ We ask that families commit to the whole week and to please adhere to the drop-off/pick-up times. This is not just for your child but so that all the children can benefit from a group experience with peers and so that we minimize additional transitions during the group time. Thank you for understanding.
- ☐ A bathroom is located on site for children who are toilet-trained and can use the bathroom (independently or with supervision).
- ☐ Weather permitting, the children will be taken to the nearby playground. Children may also attend local community outings. Permission to take the children out of the clinic room is required to participate in this camp.



SOCIAL INTENSIVE THERAPEUTIC CAMP



HOW TO PREPARE



Our activities may include sensory play, water play, and art. Dress your child appropriately for messy play.



Let your child know that they will be going to a fun class where they will get to play with other kids and a new teacher.



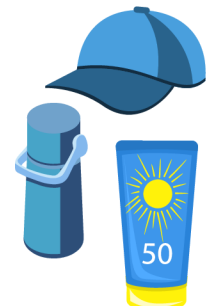
Let your child know that you will be dropping them off and picking them up!



Please pack a morning snack, lunch, and water for your child each day. We will let you know as we get closer if there are any allergies to consider. Please label your child's food.



We are planning to spend some of each day outside. Please sunscreen your child in the morning prior to arrival. If you want us to reapply, please bring your own labeled sunscreen. Also, bring a hat.





SOCIAL INTENSIVE

THERAPEUTIC CAMP

DAILY AGENDA 9:00AM - 1:00PM

CIRCLE TIME

After transitioning in, we will start with a circle time! A short structured time where kids can introduce themselves, listen to our story, and sing a song.

GROUP THERAPY ACTIVITIES

Each day, our campers will work towards their themed goal. They will learn about their social communication skills and participate in crafts, book-reading activities, and role playing with their peers.

SNACK

We will break for snack every day. Mealtimes are a wonderful opportunity to target language and social communication.

OUTSIDE TIME/OUTING

Weather permitting, the children will go to the nearby playground or to a local community location where they can play games and move their bodies, or practice social strategies.

LUNCH

Lunch time is another great opportunity to socialize.

ENDING ACTIVITIES

We will finish the day with books and conversation. All children must be picked at 1:00pm

DAILY PARENT COMMUNICATION

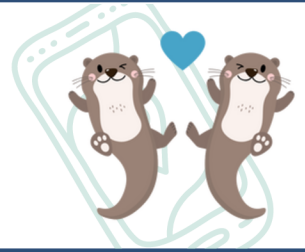
You will receive a brief recap of the day's activities each day.

END OF WEEK PARENT COMMUNICATION

At the end of the week, the SLP will schedule a virtual meeting with you to discuss recommendations moving forward from the intensive.



SOCIAL INTENSIVE THERAPEUTIC CAMP



PRICING



FULL PRICE: \$1400

REIMBURSABLE: \$775

DEPOSIT: \$625

*(using out-of-
network benefits)*

TOO EXPENSIVE?

Ask us about our
sliding scale!



INSURANCE REIMBURSEMENT

We are able to provide superbills for each day of camp, meaning that up to \$775 of the camp is eligible for reimbursement using out-of-network benefits. Each day of camp can be reimbursed as the equivalent of one speech-language therapy session.

Reimbursement eligibility may vary from plan-to-plan. We encourage you to contact your insurance provider directly to determine the out-of-network benefits for your plan.

If you intend to submit superbills for reimbursement, you would pay a deposit of \$625 up front and be billed \$155/day as the camp runs.

PRIVATE PAY

If you don't plan to submit for reimbursement, you would pay in full through our website for a total of \$1400.

MORE QUESTIONS?

Let us know! We can provide you with our Insurance FAQs and more information on the out-of-network reimbursement process.

PLEASE NOTE

Due to the group nature of the camp and the planning required, we are unable to offer refunds. If an emergency arises that prevents you from attending all or part of the camp, please contact us directly: info@talktimeboston.com

